

Stock Information

As of March 31, 2009

Common Stock

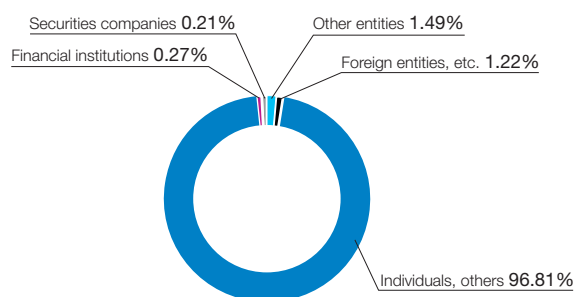
Authorized 246,000,000 shares
 Issued (As of June 30, 2009) 64,500,000 shares
 (On June 30, 2009, Common stock issued and outstanding decreased 1,500,000 shares, compared with March 31, 2009, owing to the extinguishment of treasury stock.)
 Number of Shareholders 20,594

Major Shareholders

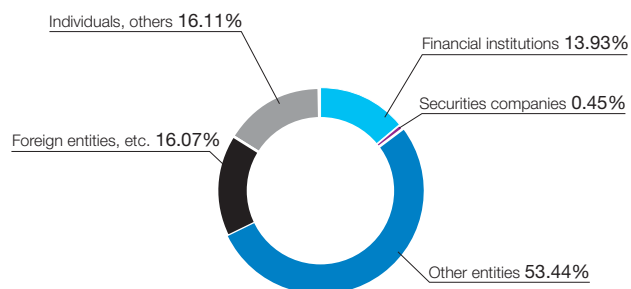
	Number of Shares	(%)
1. ITOCHU Corporation	33,665,400	51.01
2. CBNY-ORBIS SICAV	4,644,810	7.04
3. Japan Trustee Services Bank, Ltd. (Trust Account 4G)	1,985,500	3.01
4. The Master Trust Bank of Japan, Ltd. (Trust Account)	1,637,200	2.48
5. Japan Trustee Services Bank, Ltd. (Trust Account)	1,616,600	2.45
6. Japan Trustee Services Bank, Ltd. (Trust Account 4)	1,584,000	2.40
7. CTC Employee Shareholding Association	820,768	1.24
8. CBNY-Orbis Funds	766,148	1.16
9. Trust & Custody Services Bank, Ltd. as trustee for Mizuho Bank, Ltd. Retirement Benefit Trust Account re-entrusted by Mizuho Trust and Banking Co., Ltd.	420,546	0.64
10. CREDIT SUISSE SEC (EUROPE) LTD PB SEC INT NON-TR CLT	363,000	0.55

Note: Additionally, as of June 30, 2009 the Company holds 470,225 shares of treasury stock.

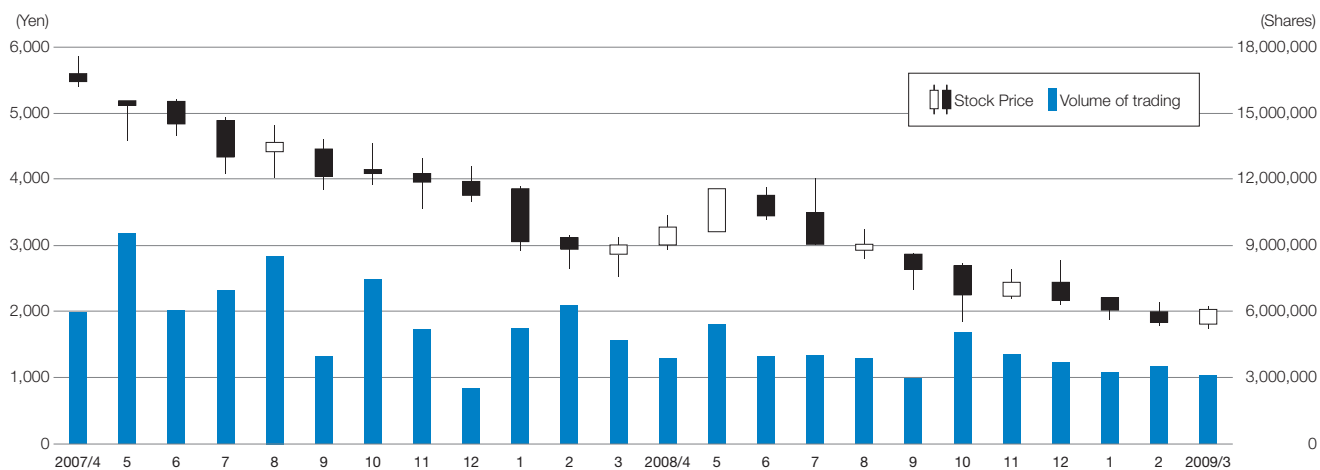
Breakdown by Number of Owners



Ownership by Percentage Shareholding



Stock Prices / Trading Volume Trends





Challenging Tomorrow's Changes

ITOCHU Techno-Solutions Corporation

<http://www.ctc-g.co.jp/>