

Stock Information

As of March 31, 2011

Common Stock

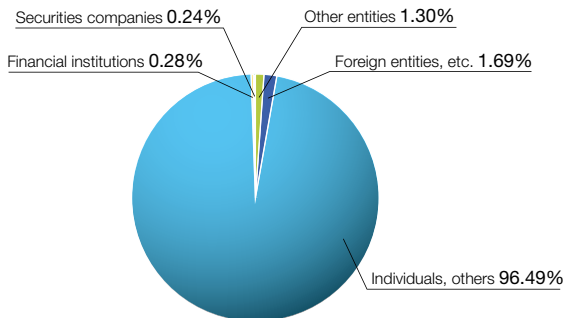
Authorized	246,000,000 shares
Issued (As of June 30, 2011)	64,500,000 shares
Number of Shareholders	18,973

Major Shareholders

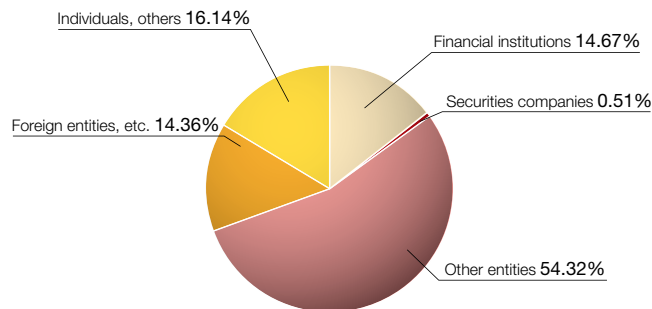
	Number of Shares	(%)
1. ITOCHU Corporation	33,665,400	52.19
2. Japan Trustee Services Bank, Ltd. (Trust Account)	2,561,100	3.97
3. The Master Trust Bank of Japan, Ltd. (Trust Account)	1,615,900	2.51
4. CTC Employee Shareholding Association	1,037,568	1.61
5. The Nomura Trust and Banking Co., Ltd. (Trust Account)	684,200	1.06
6. Trust & Custody Services Bank, Ltd. (Trust Account)	681,200	1.06
7. Japan Trustee Services Bank, Ltd. (Trust Account 9)	636,300	0.99
8. Japan Trustee Services Bank, Ltd. (Trust Account 4)	530,300	0.82
9. UBS AG LONDON A/C IPB SEGREGATED CLIENT ACCOUNT	504,300	0.78
10. Trust & Custody Services Bank, Ltd. as trustee for Mizuho Bank, Ltd. Retirement Benefit Trust Account re-entrusted by Mizuho Trust and Banking Co., Ltd.	420,546	0.65

Note: Additionally, as of June 30, 2011 the Company holds 2,142,792 shares of treasury stock.

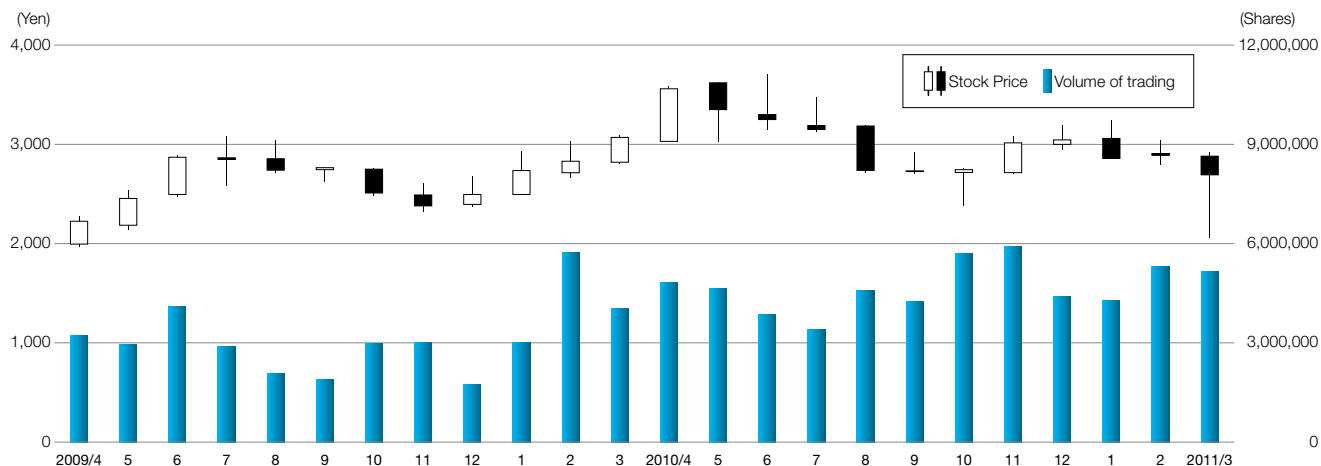
Breakdown by Number of Owners



Ownership by Percentage Shareholding



Stock Prices / Trading Volume Trends



ITOCHU Techno-Solutions Corporation

<http://www.ctc-g.co.jp/>

